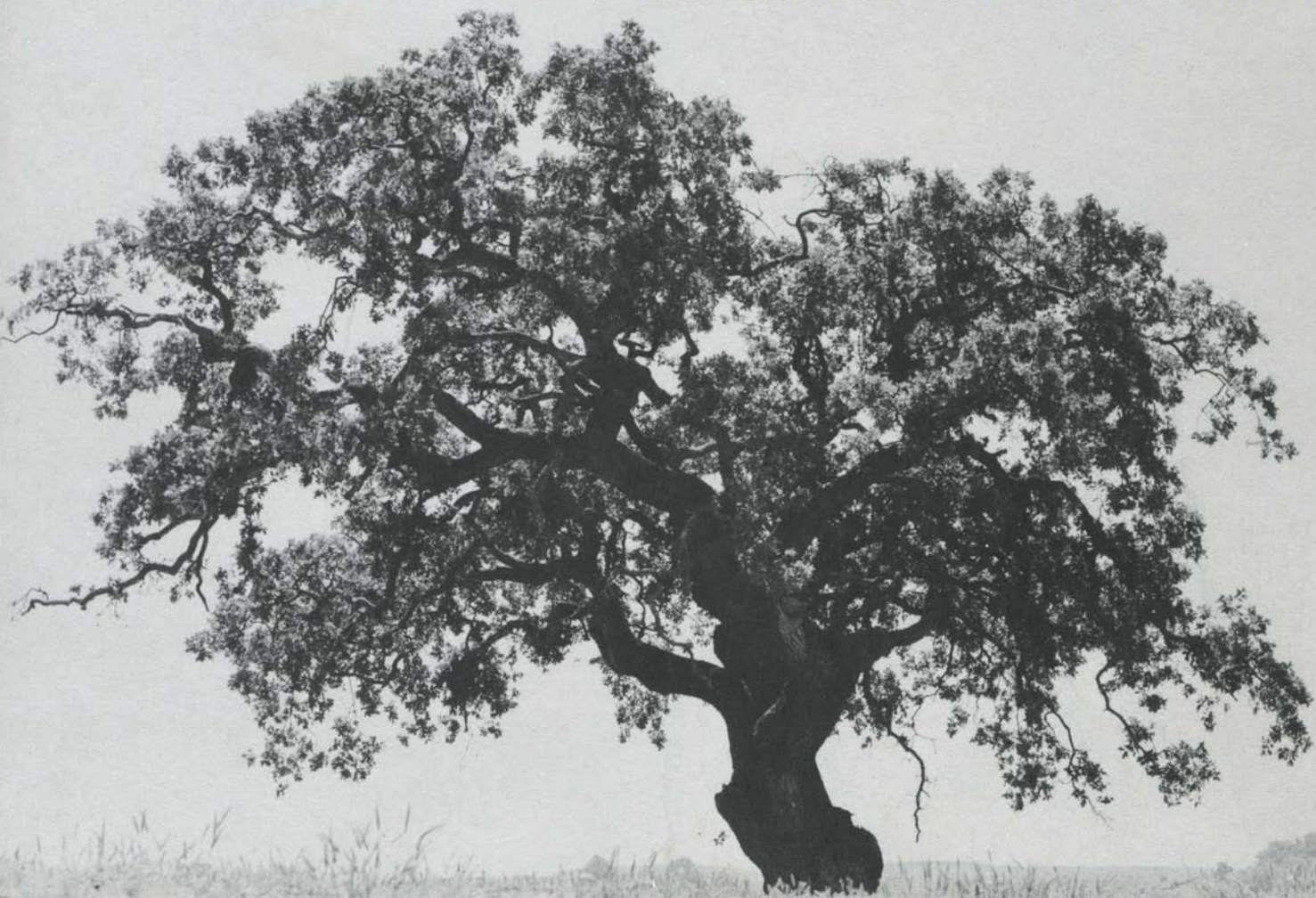


EICHLER HOMES IN CONEJO VILLAGE



Located on beautiful rolling land in the Conejo Valley, Eichler homes are well situated to an exceptional variety of educational, recreational, shopping and freeway facilities. The Conejo Valley is smog-free and coastal breezes keep summer temperatures ten to fifteen degrees cooler than the San Fernando Valley. This superior climate combined with a relaxing country atmosphere creates an ideal environment.

Education Close by are Acacia Elementary School and Thousand Oaks High School, as well as St. Paschal Parochial School. The Lutheran College and Newbury Park Academy are also nearby.

Shopping Excellent shopping is easily reached. A new center is minutes away including Newberry's and a site for Sears Roebuck, May Company and the fabulous new Fashion Square, with smart shops, are readily accessible. **Recreation** A community park and new golf course are within 5 minutes and the ocean at Malibu or Ventura is less than 30 minutes drive. Lake Sherwood for fishing and boating is just a short distance away. **Eichler Sales Office:**

1509 Suffolk Avenue, Thousand Oaks, California. Telephone 495-4800. □ □ □





CALIFORNIA
LUTHERAN
COLLEGE



FIRE
STATION



THOUSAND OAKS
HIGH SCHOOL



EICHLER
HOMES



ST. PASCHAL
CHURCH AND SCHOOL



ACACIA
SCHOOL



JANSS RD.

CAMINO MANZANAS

NORMAN AVE.

SHOPPING



GAINSBOROUGH RD.

LYNN
RANCH

CALLE YUCCA

LYNN ROAD



COMMUNITY
PARK

MOORPARK RD.

THOUSAND
OAKS

HOSPITAL



ERBES RD.

NEWBURY
PARK
ACADEMY



RANCHO
CONEJO
RESEARCH
CENTER

PACKARD-BELL
NORTHROP
WESTINGHOUSE

SHOPPING
CENTER



THEATRE
LIBRARY

POST OFFICE

VILLAGE LANE

RESTAURANT
BOWLING



MEDICAL
BUILDING



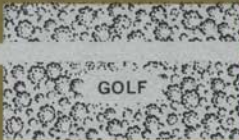
VENTURA

BLVD.

SHOPPING TO JUNGLELAND



← TO VENTURA/SANTA BARBARA



GOLF

US 101

TO LOS ANGELES →

NEWBURY
PARK



Plan 554

FOUR BEDROOMS, 2 BATHS, LIVING AND DINING ROOM, KITCHEN, MULTI-PURPOSE ROOM, HOBBY ROOM, AND GARAGE.

SQUARE FOOTAGE: LIVING AREA 1809, GARAGE 500.

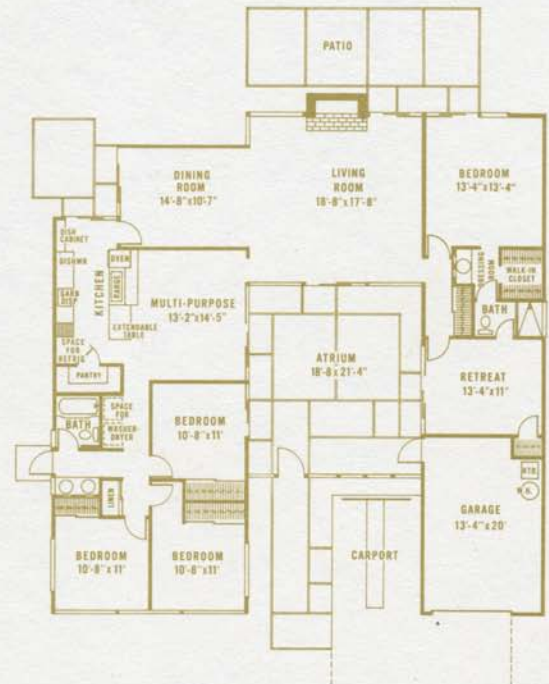
This plan offers a maximum of outdoor living by using the total site area. With private gardens to the front and rear you will enjoy secluded dining and relaxation. This separation of outdoor spaces makes varied family activities easily realized. Serving from the kitchen is simple and convenient. Notice the large garage with generous storage space.

Plan 1605

FOUR BEDROOMS, 2 BATHS, LIVING AND DINING ROOM, KITCHEN, MULTI-PURPOSE ROOM, RETREAT, ATRIUM, GARAGE AND CARPORT.

SQUARE FOOTAGE: LIVING AREA 2407, GARAGE 285, CARPORT 299.

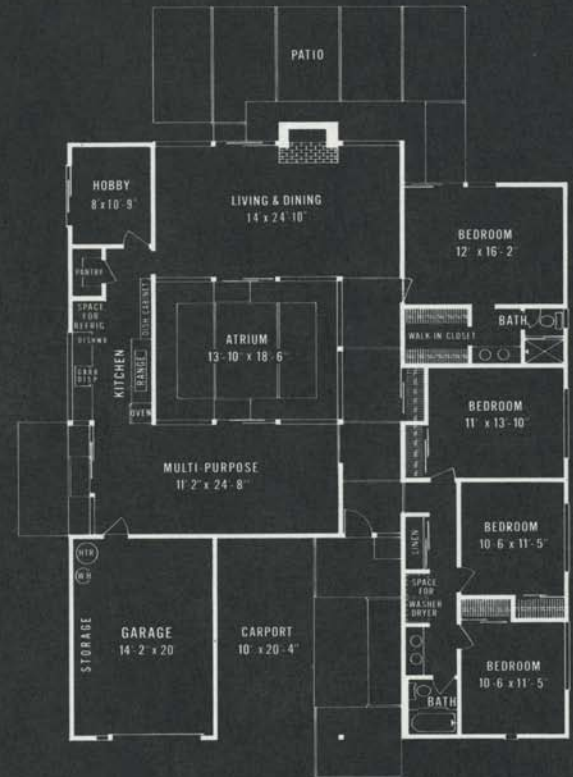
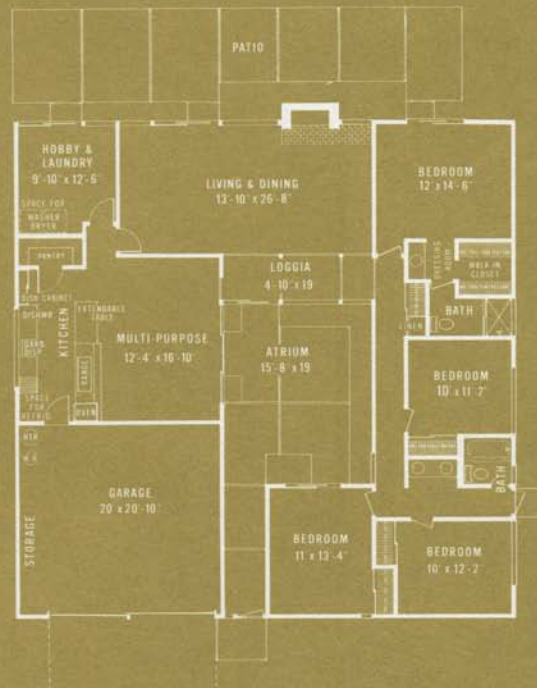
With eight sliding glass doors, this luxurious home encourages a maximum of outdoor living. A separated retreat in the master bedroom wing is ideal for study and hobbies. The additional three bedrooms have a convenient bath with double vanity and a door to the outside allowing children to clean up before entering the main living areas.



Plan 574

FOUR BEDROOMS, 2 BATHS, LIVING AND DINING ROOM, KITCHEN, MULTI-PURPOSE ROOM, HOBBY ROOM, ATRIUM AND GARAGE.
SQUARE FOOTAGE: LIVING AREA 2251,
GARAGE 447.

This plan includes a separate hobby and laundry room which has accessibility to the kitchen and rear garden. A huge pantry provides abundant storage space for the conveniently planned kitchen. You will enjoy the direct entry from the garage. The master bedroom suite has its own private rear patio for outdoor relaxation.



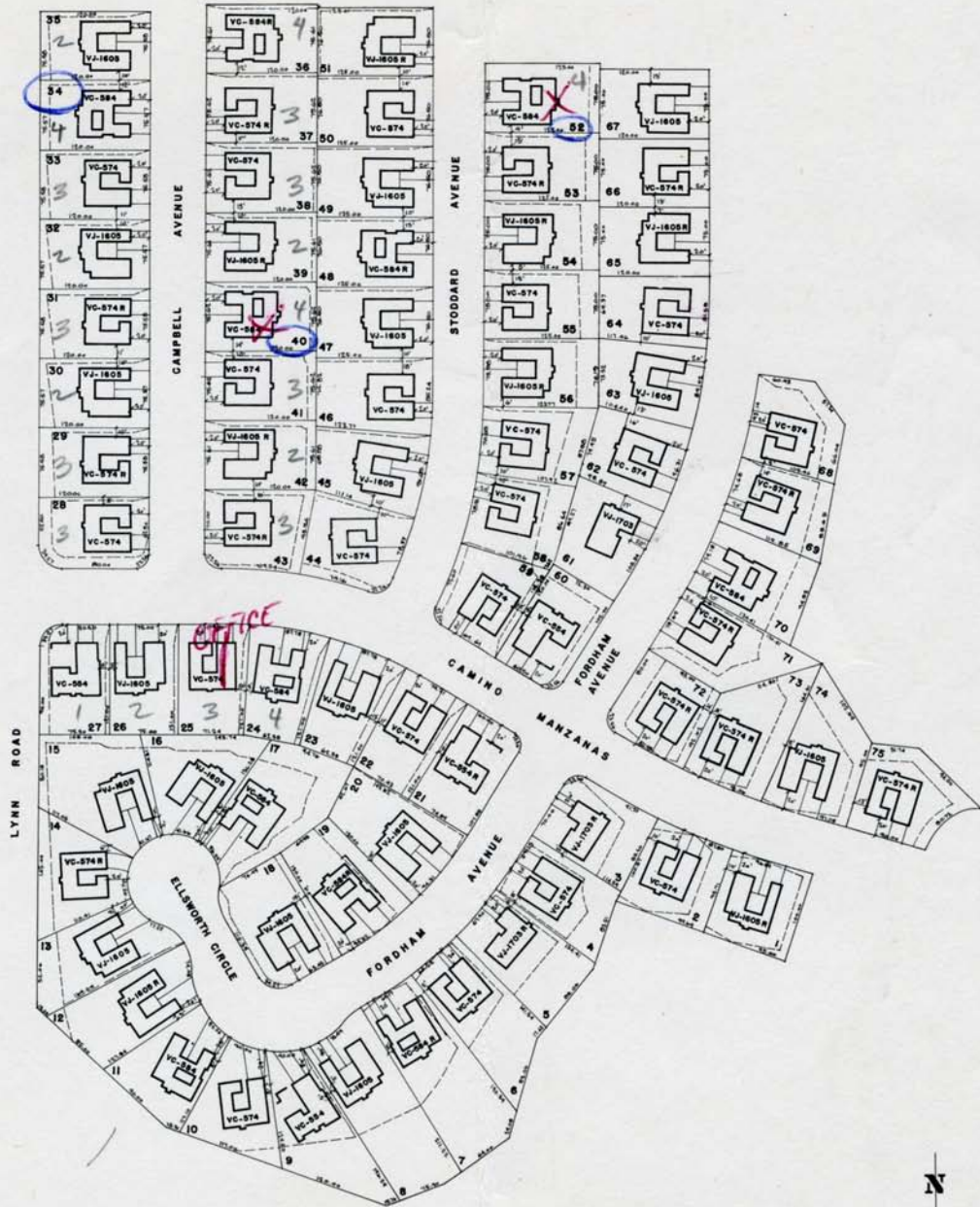
Plan 584

FOUR BEDROOMS, 2 BATHS, LIVING AND DINING ROOM, KITCHEN, MULTI-PURPOSE ROOM, HOBBY ROOM, ATRIUM, GARAGE AND CARPORT.
SQUARE FOOTAGE: LIVING AREA 2284,
GARAGE 301, CARPORT 380.

The extra large multi-purpose room in the heart of the house serves as the family activity center. You will enjoy the abundant living and growing space of this room, plus the added privacy it contributes to the living and dining room. The side entrance into the multi-purpose room and door to the garage provide step-saving convenience to the kitchen.

EICHLER HOMES HEADQUARTERS • 360 PINE STREET • SAN FRANCISCO • YUKON 1-2870





C O N E J O

SCALE 0 50 100 FEET

EICHLER HOMES, INC

A. QUINCY JONES · FREDERICK E. EMMONS & ASSOC.
ARCHITECTS & SITE PLANNERS

